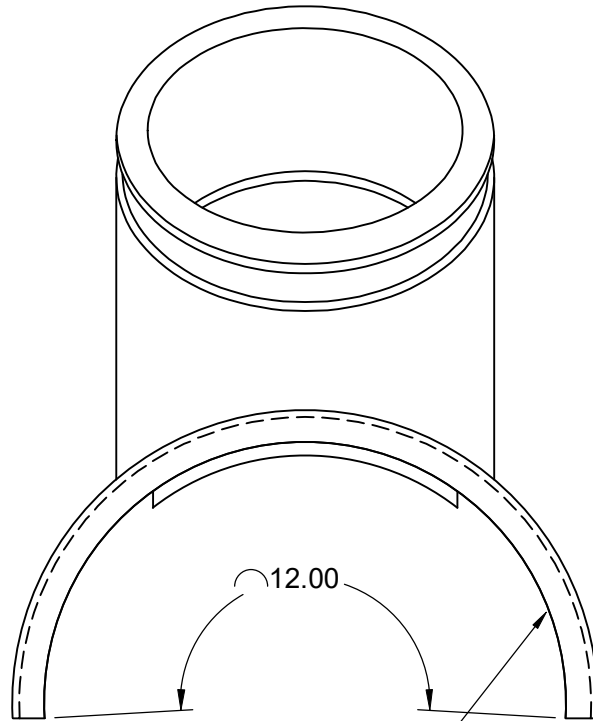
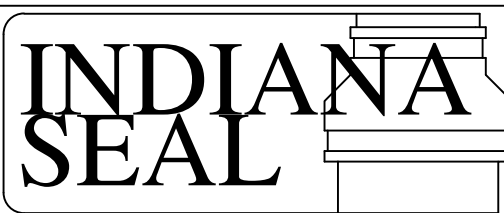
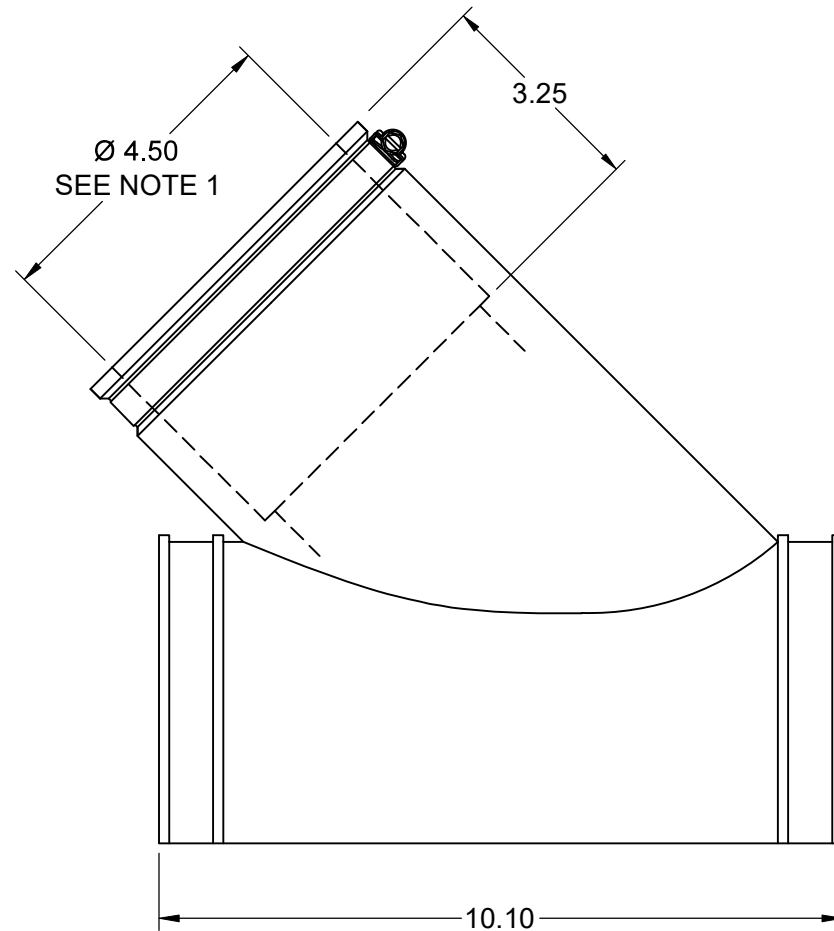


1. BRANCH ACCEPTS PIPE Ø 4.215" TO Ø 4.500"
2. STRAPS SUPPLIED WITH SADDLE FIT PIPE UP TO 15.30" DIAMETER
FOR LARGER MAINS ORDER STRAPS SEPARATELY



SADDLE SKIRT CONFORMS TO PIPE Ø 6"-36"



A GPK PRODUCTS Company

1-800-428-5309 FARGO, ND

MATERIAL LIST

QTY	ITEM	P/N
1	SADDLE	SW-4
1	CLAMP	SSHC80
2	CLAMP	133-0015

FOR REFERENCE ONLY DIMENSIONS SUBJECT TO CHANGE

TITLE

FLEXIBLE SADDLE WYE WITH 4" BRANCH

DATE 3-26-19

SCALE NONE

PART NO.

SW-4